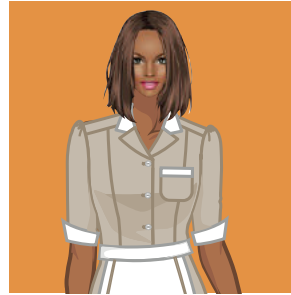
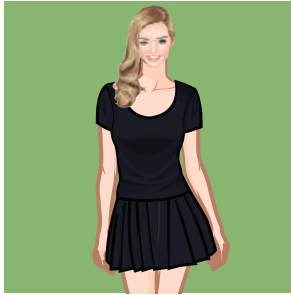


Formteks®

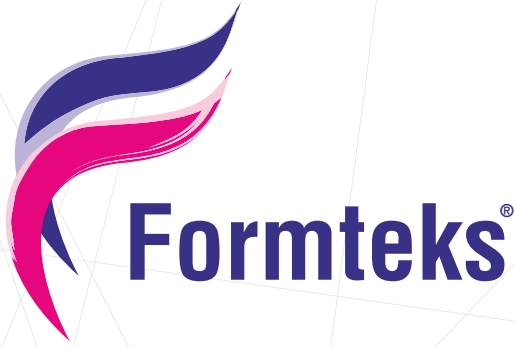


Formteks Uniform Design Catalog





Formteks Uniform Design Catalog



Fashion is temporary, what actually matters is the **Style**.

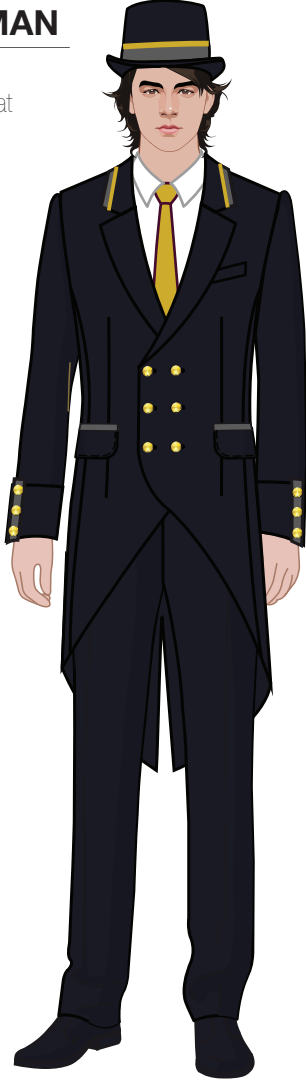
With that **motto** in mind, we manufacture **work uniforms** and **work wear clothing** that represent our **corporate identity** for a variety of industries.

As 'Formteks', we aim to develop a **new** understanding to uniforms and work appeal with our **young** and **dynamic team** while serving your **business needs**.

www.formteks.com.tr

DOORMAN

- Hat
- Frock Coat
- Shirt
- Tie
- Trousers



BELLBOY

- Waistcoat
- Shirt
- Trousers



Front Office

RECEPTION

- Suit
- Shirt
- Tie

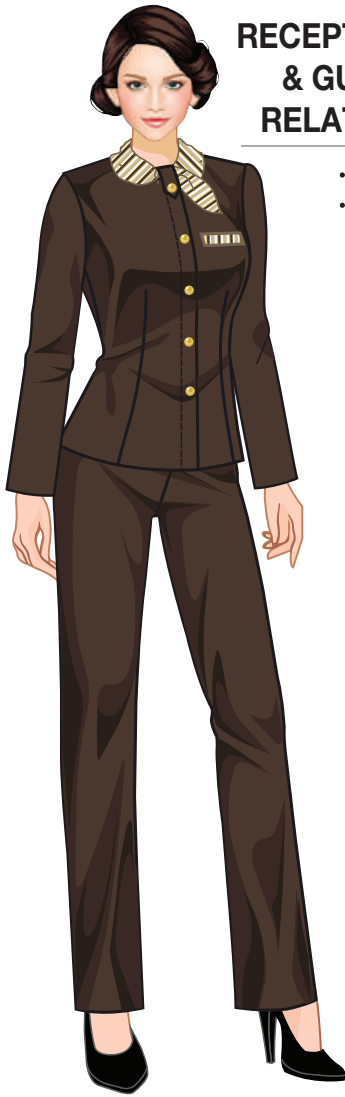


RECEPTION

- Jacket
- Dress



RECEPTION & GUEST RELATION

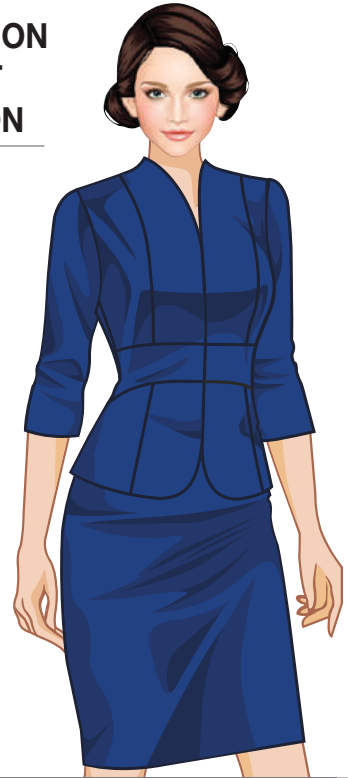


- Suit
- Scarf

RECEPTION & GUEST RELATION



- Jacket
- Blouse
- Skirt



RECEPTION & BELLBOY

- Shirt
- Trousers
- Belt



RECEPTION & GUEST RELATION



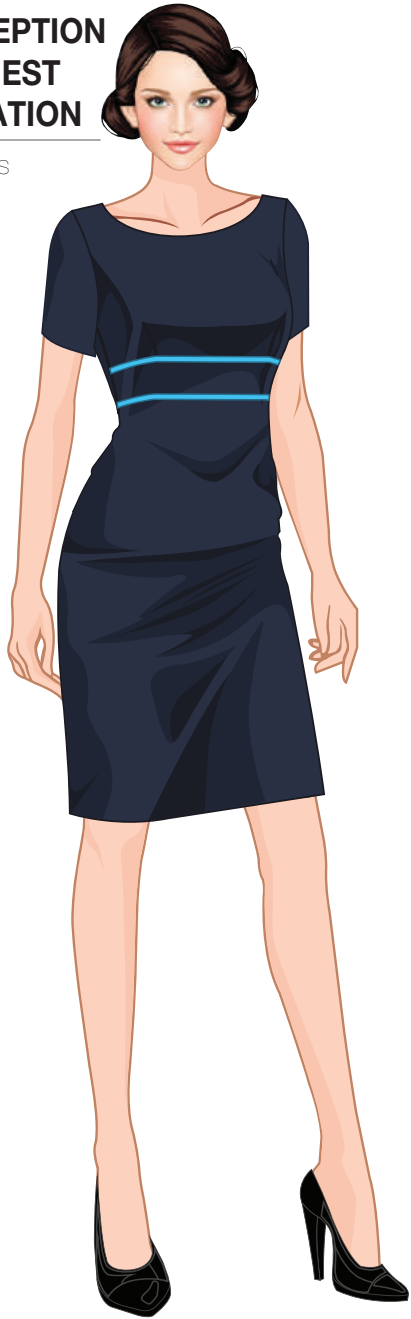
- Shirt
- Skirt



- Suit
- Blouse

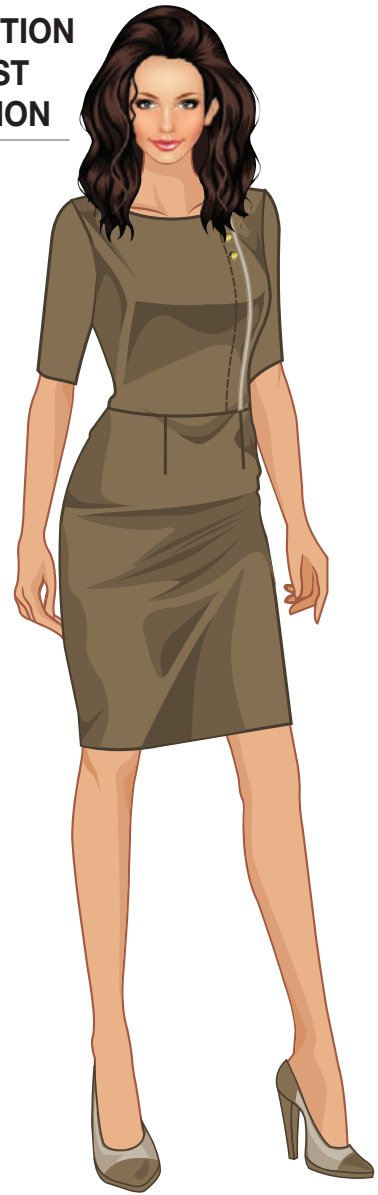
**RECEPTION
& GUEST
RELATION**

- Dress



**RECEPTION
& GUEST
RELATION**

- Dress

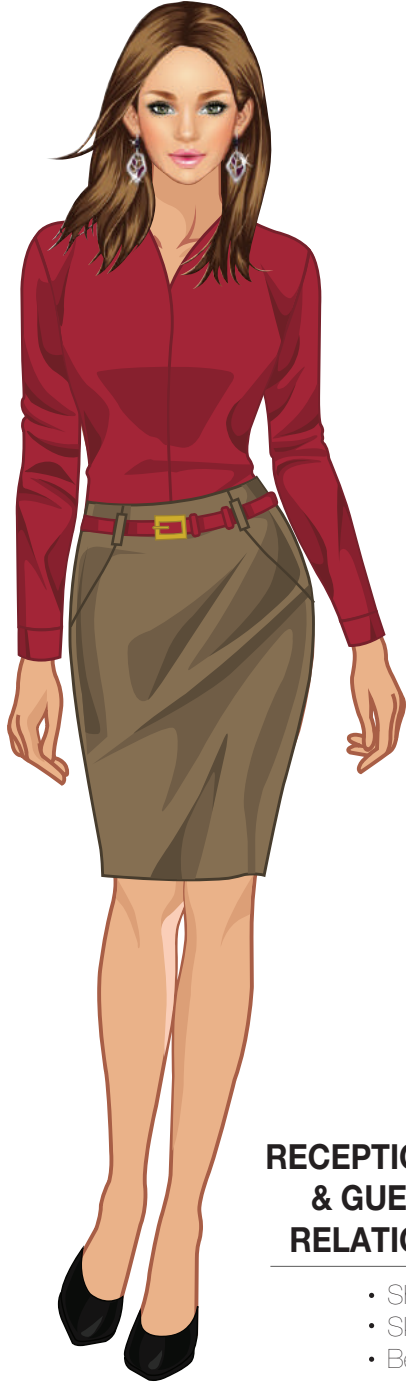


**RECEPTION
& GUEST
RELATION**

- Shirt
- Trousers



Front Office



RECEPTION & GUEST RELATION

- Shirt
- Skirt
- Belt

WELCOME GIRL

- Caftan
- Shirt
- Shalwar



RECEPTION & GUEST RELATION

- Shirt
- Skirt



Front Office

BELLBOY

- Caftan
- Shirt
- Belt
- Trousers



BELLBOY

- Tunic
- Shirt
- Trousers



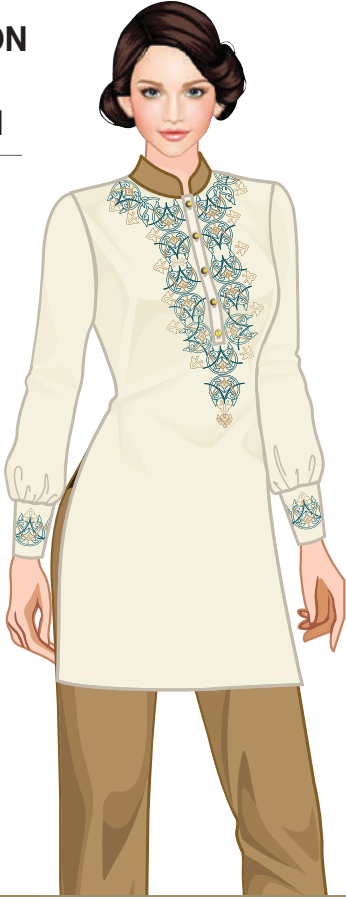
BELLBOY

- Tunic
- Trousers



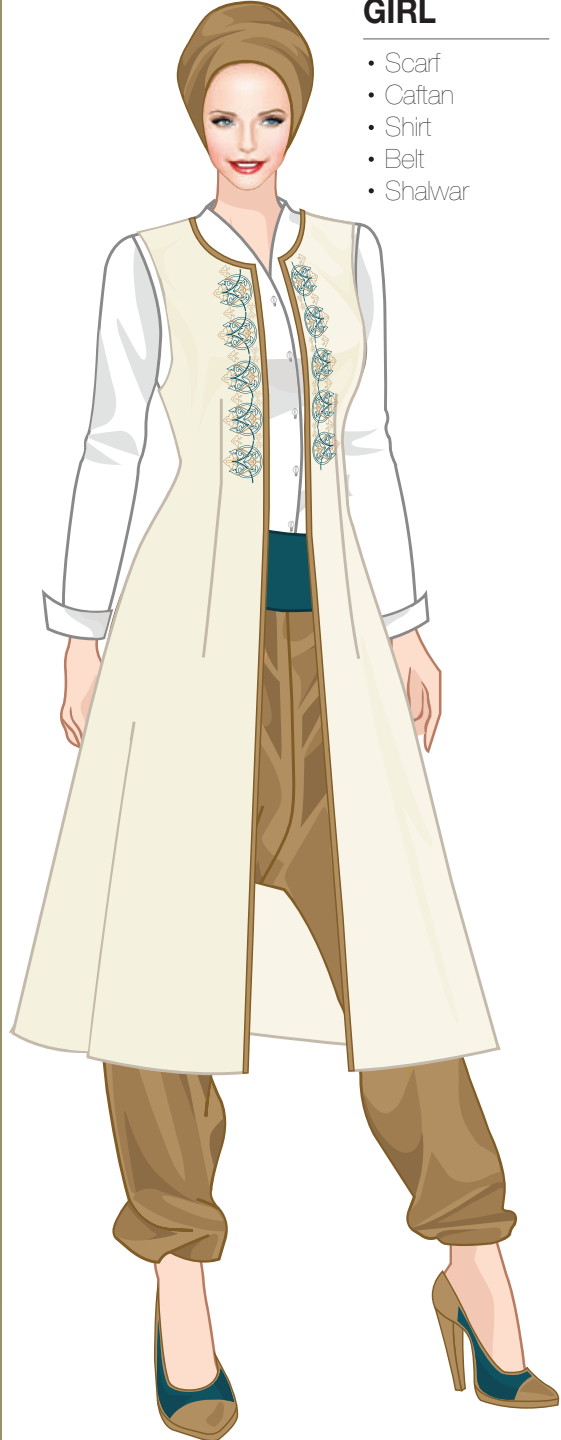
RECEPTION & GUEST RELATION

- Tunic
- Trousers



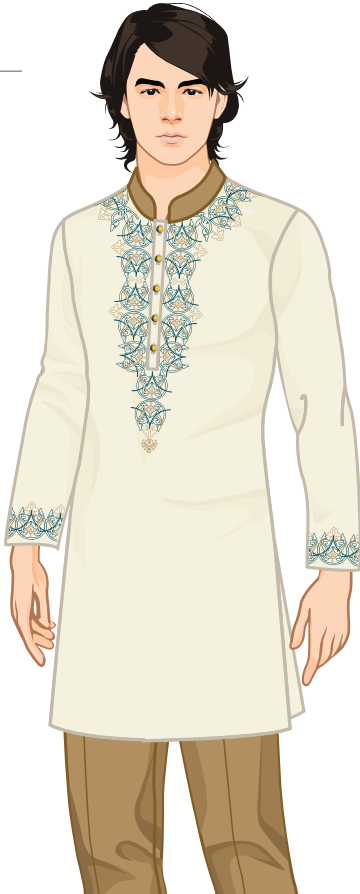
WELCOME GIRL

- Scarf
- Caftan
- Shirt
- Belt
- Shalwar



BELLBOY

- Tunic
- Trousers



Food & Beverage

CAPTAIN & HEADWAITER

- Jacket
- Shirt
- Bow Tie
- Trousers



WAITRESSES

- Shirt
- Apron
- Trousers



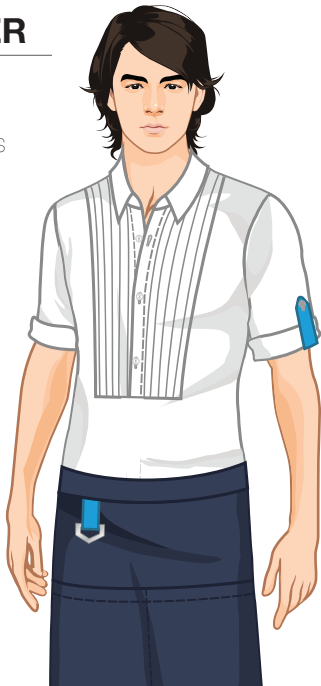
WAITER

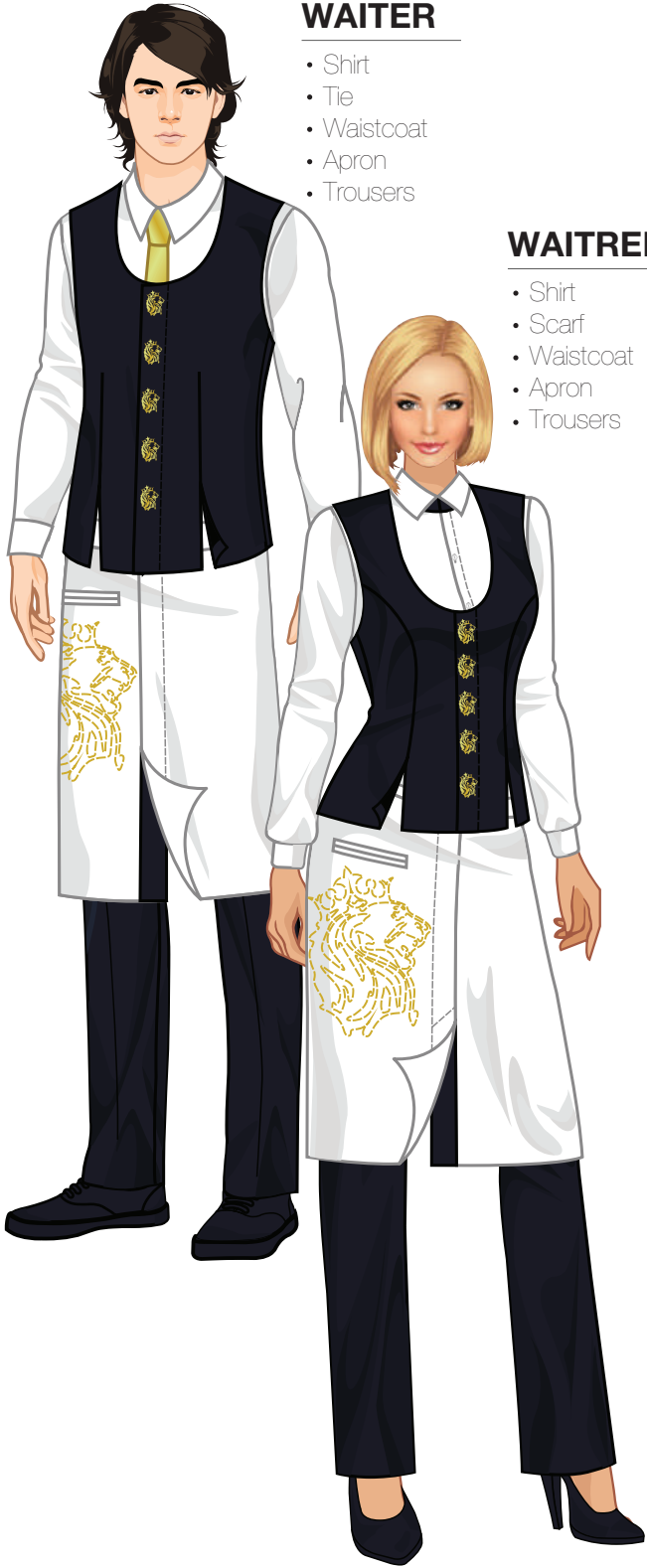
- Shirt
- Apron
- Trousers



WAITER

- Shirt
- Apron
- Trousers





WAITER

- Shirt
- Tie
- Waistcoat
- Apron
- Trousers

WAITRESSES

- Shirt
- Scarf
- Waistcoat
- Apron
- Trousers

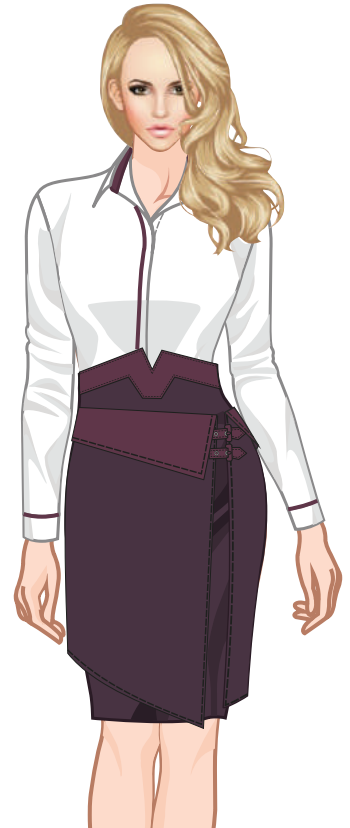
WAITRESSES

- Shirt
- Apron
- Trousers



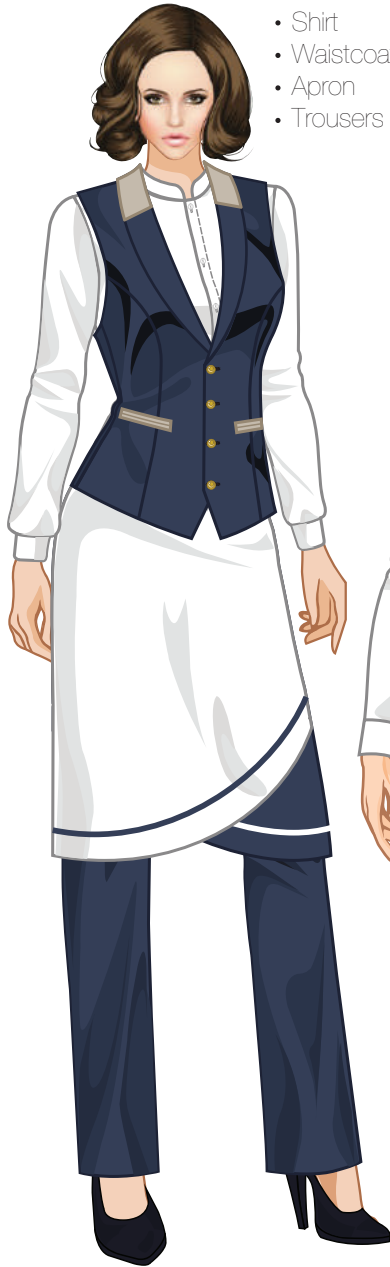
WAITRESSES

- Shirt
- Apron
- Skirt



WAITRESSES

- Shirt
- Waistcoat
- Apron
- Trousers



WAITER

- Shirt
- Waistcoat
- Apron
- Trousers



WAITER

- Shirt
- Waistcoat
- Apron
- Trousers



WAITER

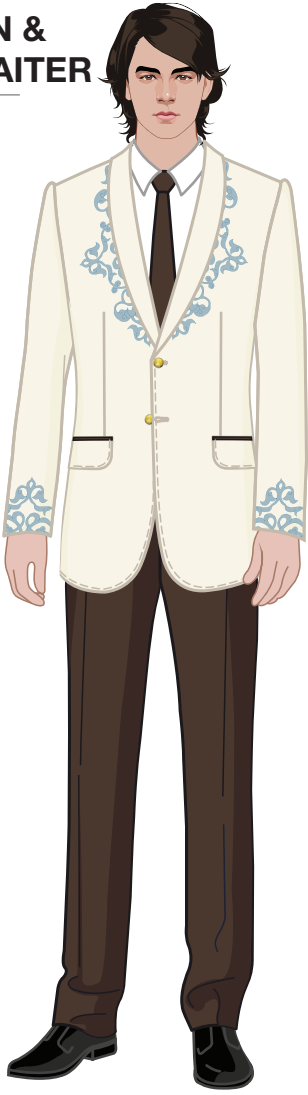
- Shirt
- Waistcoat
- Apron
- Trousers



Food & Beverage

CAPTAIN & HEADWAITER

- Jacket
- Shirt
- Tie
- Trousers



WAITRESSES

- Shirt
- Waistcoat
- Trousers



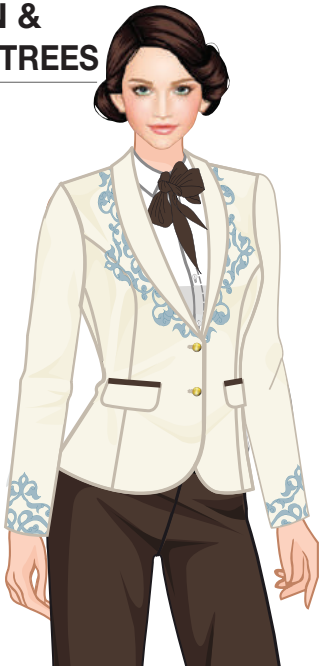
WAITER

- Shirt
- Waistcoat
- Trousers



CAPTAIN & HEADWAITRESSES

- Jacket
- Shirt
- Scarf
- Trousers



Food & Beverage



WAITRESSES

- Shirt
- Short

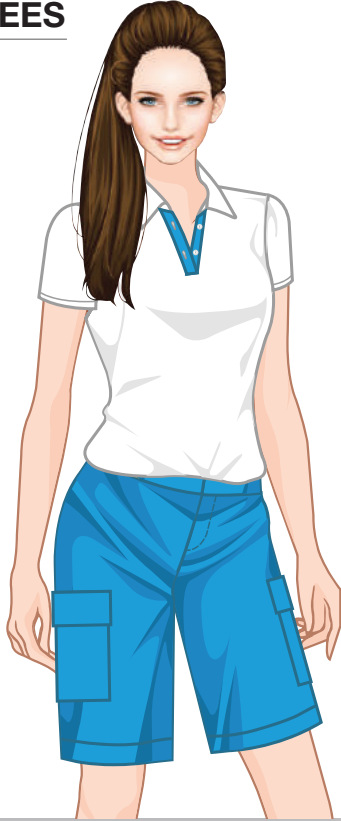


WAITER

- Shirt
- Short

WAITRESSES

- T Shirt
- Short



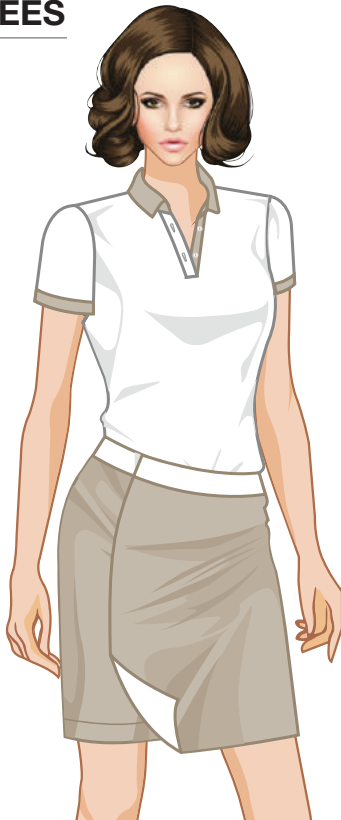
WAITER

- T Shirt
- Short



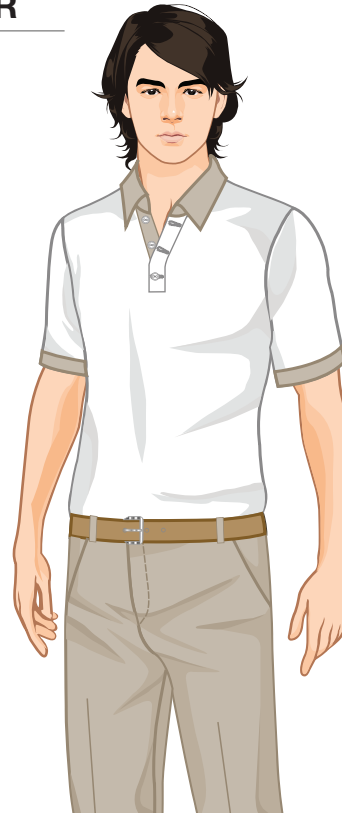
WAITRESSES

- T Shirt
- Skort



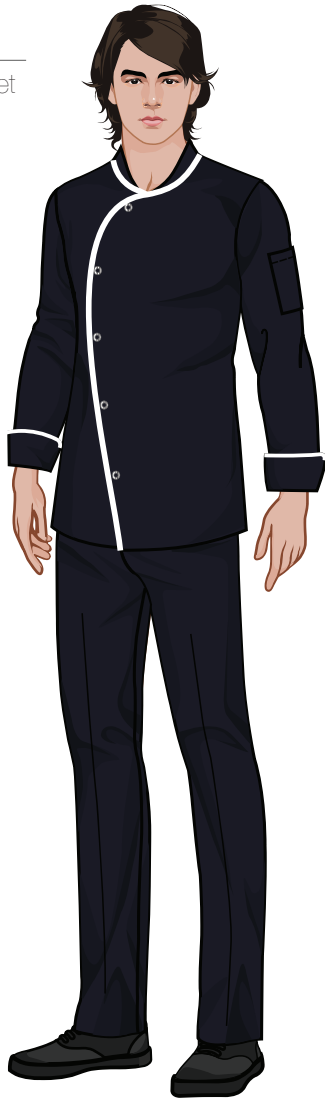
WAITER

- T Shirt
- Belt
- Short



CHEF

- Chef Jacket
- Trousers



Kitchen

CHEF

- Chef Jacket
- Apron
- Trousers



WAITER

- Hat
- Chef Jacket
- Trousers



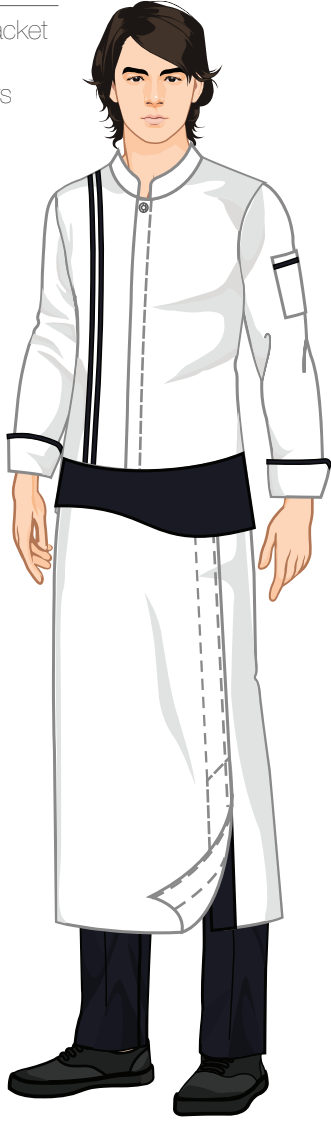
CHEF

- Chef Jacket
- Trousers



CHEF

- Chef Jacket
- Apron
- Trousers



CHEF

- Hat
- Chef Jacket
- Trousers



CHEF

- Chef Jacket
- Trousers



CHEF

- Chef Jacket
- Apron
- Trousers



CHEF

- Chef Jacket
- Trousers



CHEF

- Hat
- Chef Jacket
- Trousers



CHEF

- Chef Jacket
- Trousers



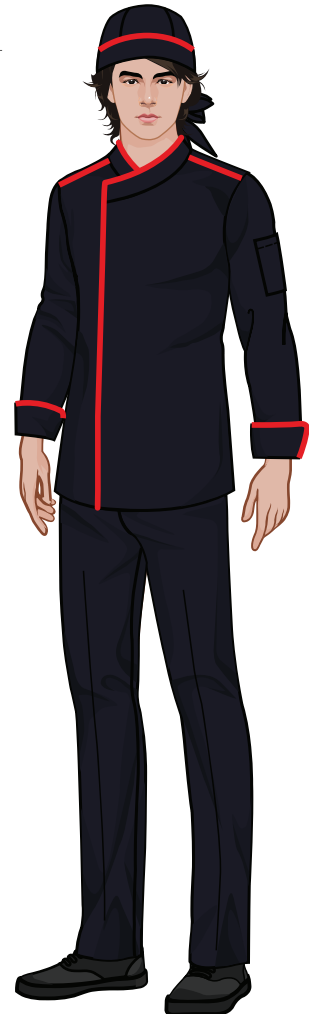
CHEF

- Chef Jacket
- Trousers



CHEF

- Hat
- Chef Jacket
- Trousers



CHEF

- Chef Jacket
- Trousers



CHEF

- Chef Jacket
- Trousers



CHEF

- Hat
- Chef Jacket
- Trousers



Steward

STEWARD

- Jacket
- Trousers



Casino

GUEST RELATION

- Dress



DEALER

- Shirt
- Trousers



DEALER

- Shirt
- Skirt



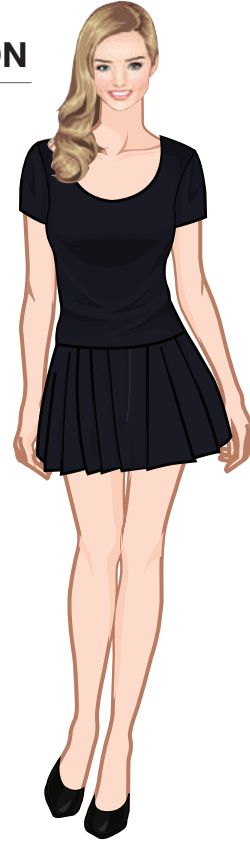
CROUPIER

- Shirt
- Belt
- Trousers



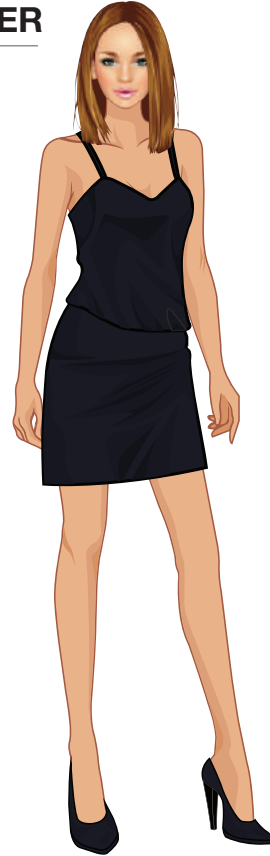
GUEST RELATION

- Dress



CROUPIER

- Dress



Housekeeping

MAID

- Shirt
- Trousers



HOUSEMAN

- Shirt
- Trousers



MAID

- Tunic
- Apron
- Trousers



MAID

- Tabard Apron
- T Shirt
- Trousers



MAID

- Scarf
- Sweat Shirt
- Tunic
- Trousers



HOUSEMAN

- Jacket
- Trousers



MAID

- Scarf
- Sweat Shirt
- Tunic
- Trousers



HOUSEMAN

- Jacket
- Trousers



MAID

- Dress
- Apron



MAID

- Dress
- Apron



MAID

- Tabard Apron
- Shirt
- Trousers



Housekeeping

MAID

- Tunic
- Trousers



HOUSEMAN

- Jacket
- Trousers



MAID

- Tunic
- Trousers



HOUSEMAN

- Jacket
- Trousers



Spa & Wellness

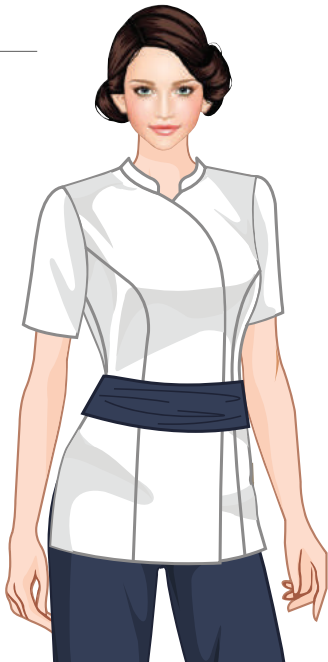
SPA

- Tunic
- Belt
- Trousers



SPA

- Tunic
- Belt
- Trousers



SPA

- Tunic
- Trousers



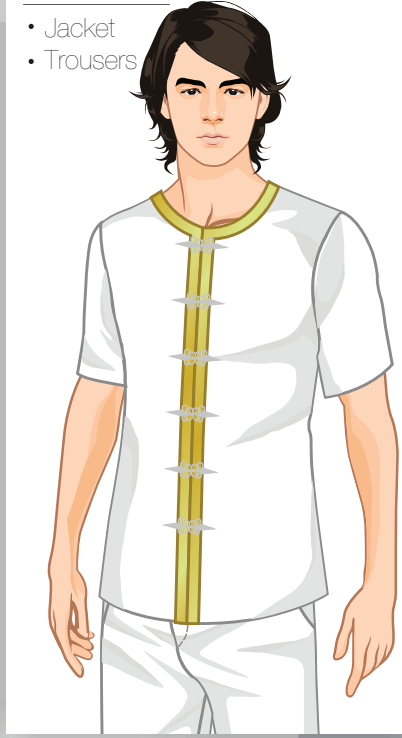
SPA

- Blouse
- Dress



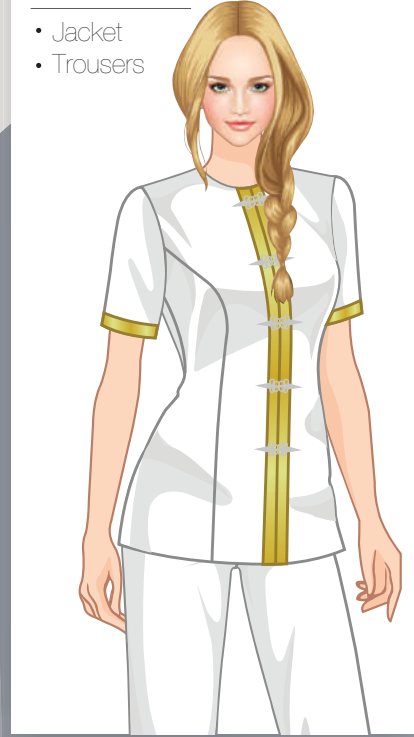
SPA

- Jacket
- Trousers



SPA

- Jacket
- Trousers



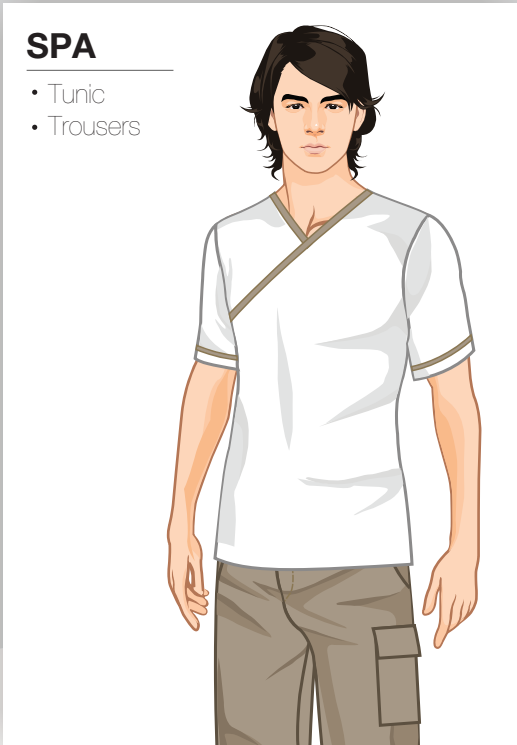
SPA

- Tunic
- Trousers



SPA

- Tunic
- Trousers

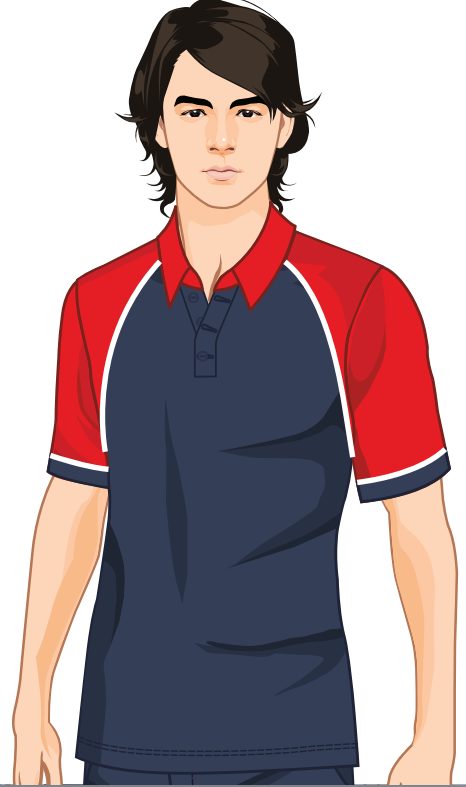


Tshirt

• Polo T Shirt



• Polo T Shirt



• Polo T Shirt



• Polo T Shirt



• Polo T Shirt



• T Shirt



• Polo T Shirt



• T Shirt



• Hat
• T Shirt



TECHNICAL

- Jacket
- Trousers



TECHNICAL

- Jacket
- Sweat Shirt
- Trousers



- Shirt
- Trousers
- Belt



Technical

- Jacket
- Shirt
- Trousers



- Shirt
- Trousers
- Belt



- Polo T Shirt
- Trousers



Garden

- Polo T Shirt
- Trousers



- Shirt
- Belt
- Trousers



- Fleece Jacket
- Trousers



- Hat
- Polo T Shirt



- Polo T Shirt
- Bib Pants

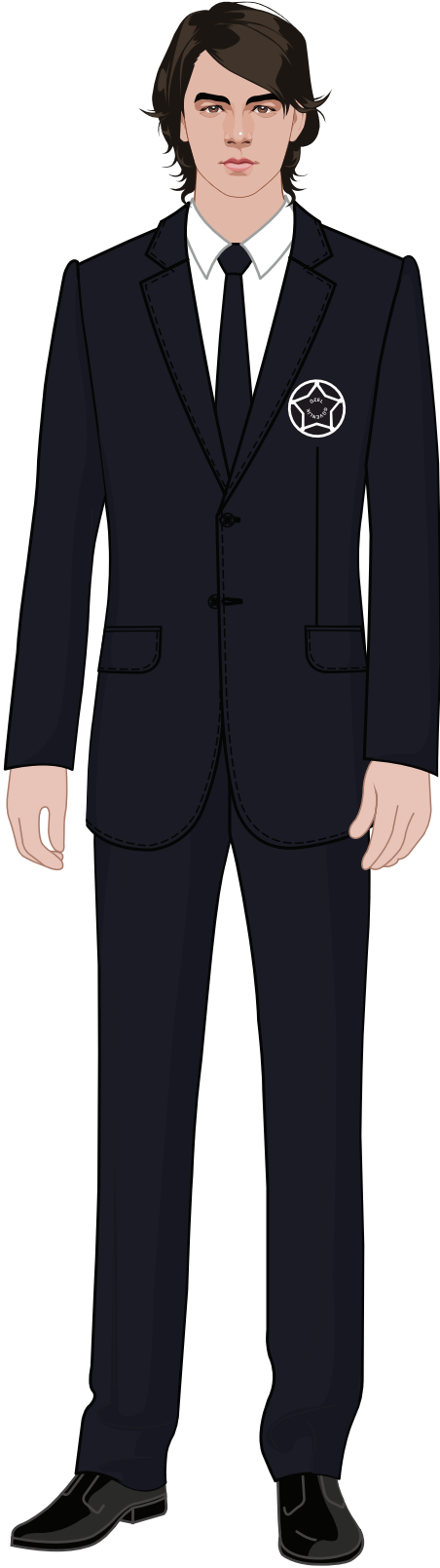


- T Shirt
- Coverall



Security

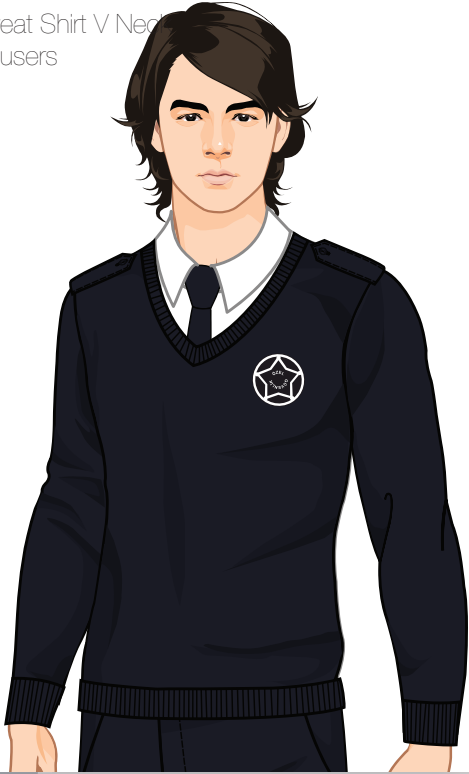
- Suit
- Shirt
- Tie



- Shirt
- Tie
- Belt
- Trousers



- Shirt
- Tie
- Sweat Shirt V Neck
- Trousers



- Polo T Shirt
- Belt
- Trousers



- Hat
- Shirt
- Tie
- Belt
- Trousers

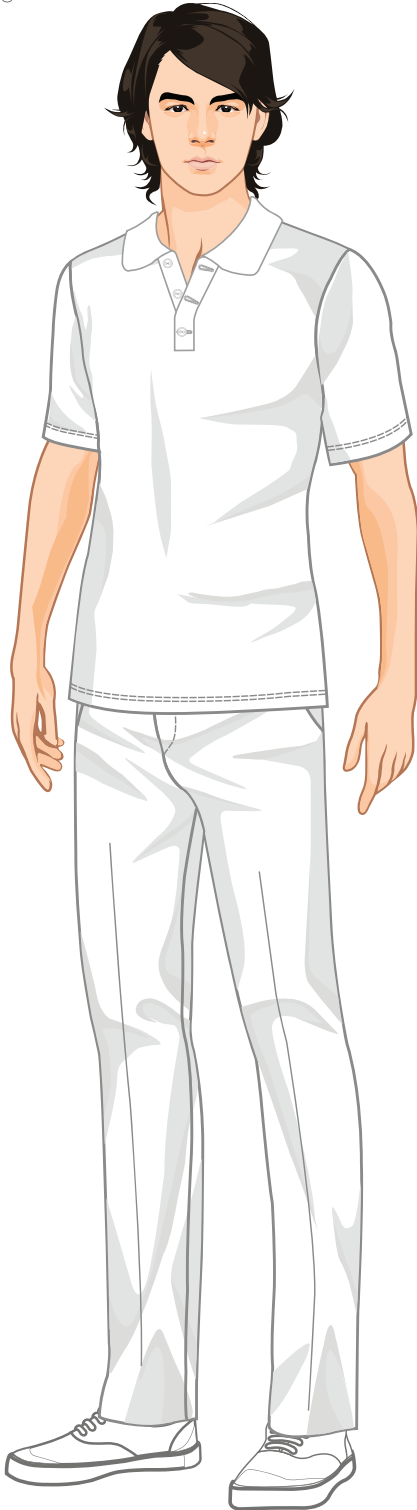


- Shirt
- Belt
- Trousers

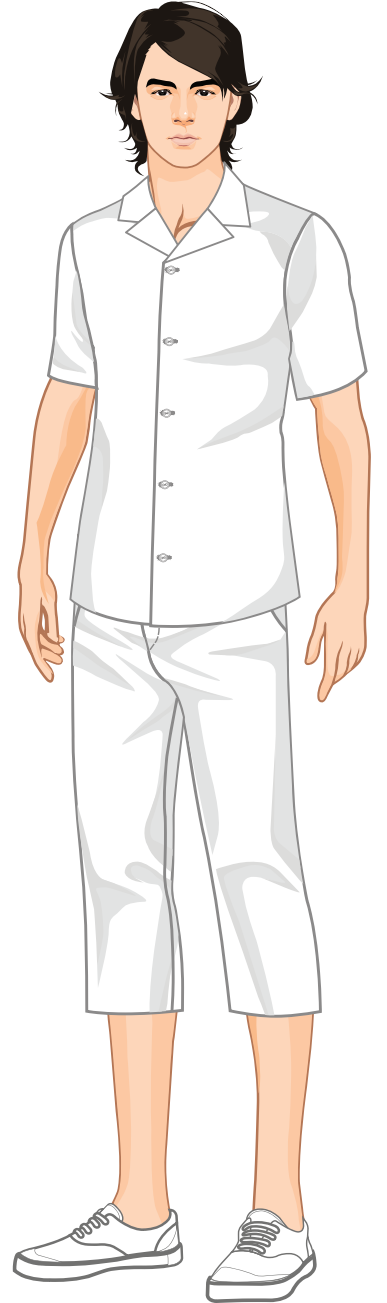


Laundry

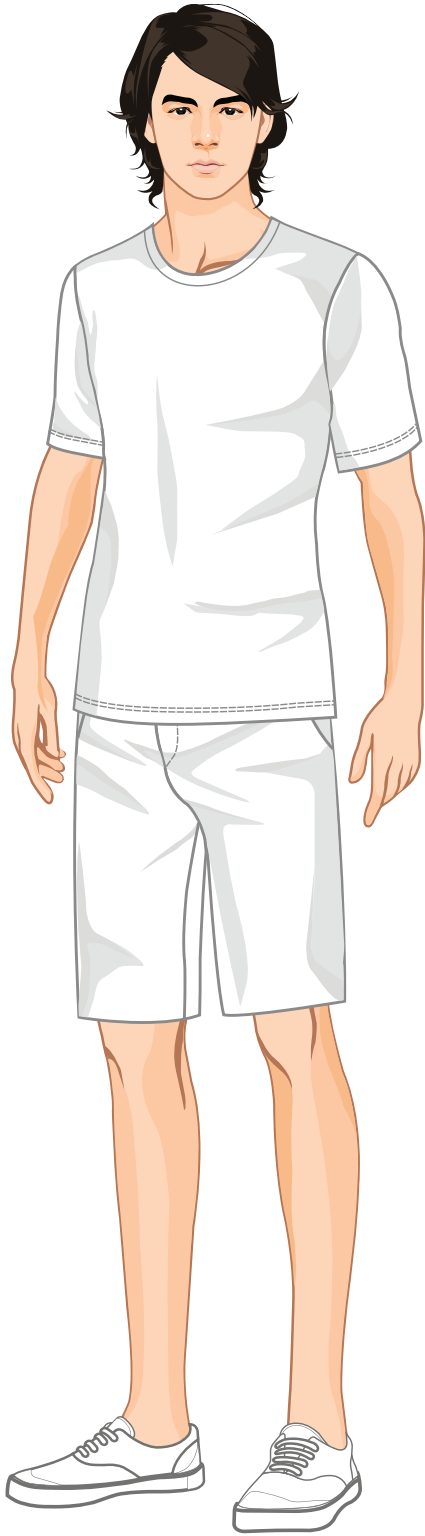
- Polo T Shirt
- Trousers



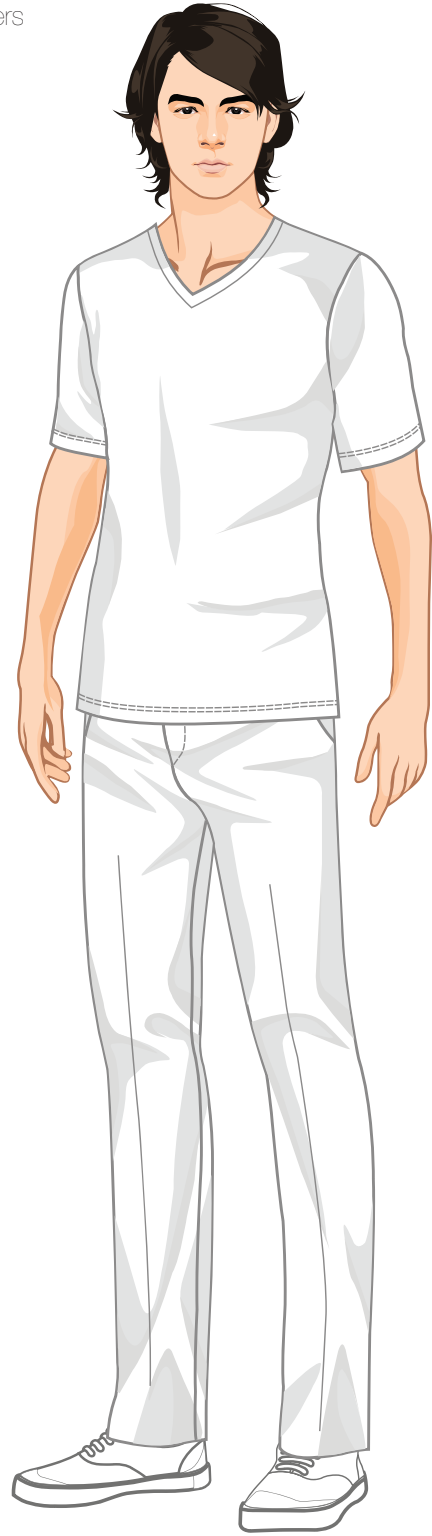
- Jacket
- Capri



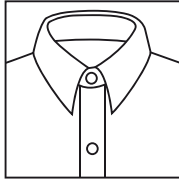
- T Shirts
- Shorts



- T Shirts
- Trousers

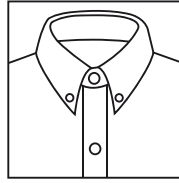


Collar



classic

The most common shirt collar. It has a clean look suitable for both formal and casual shirts.



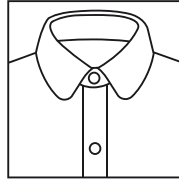
button down

A collar with button holes on the points to fasten them so the body of the shirt



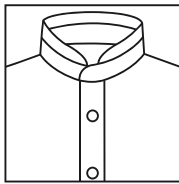
spread

A shirt collar with a wide spread between the points, which can accommodate a bulky necktie knot.



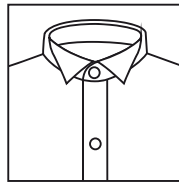
club

A shirt collar with rounded points..



mandarin

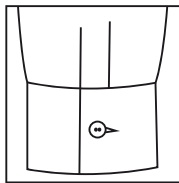
A short unfolded stand-up collar. It starts at the neckline and typically rises vertically 2 - 5 centimeters. It's the western interpretation of dresses worn by mandarins in imperial china..



wing tip

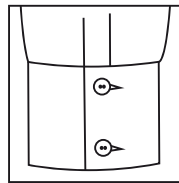
A formal collar style, designed to be worn under a tuxedo for white or black tie events. Normally it is worn with the bow tie..

Cuffs



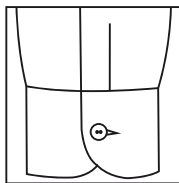
one button

The most common type of cuffs with a fitted button the button is stitched on one side of the divide and buttonhole on the other...



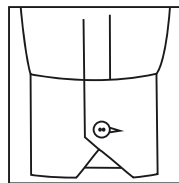
two button

It closes with two buttons, one on top of the other. Some cuffs have the option of cutting off the buttons when necessary to convert the shirt to a single-cuff worn with cufflinks.



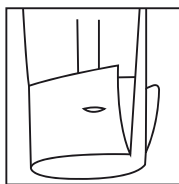
rounded

It's simply a barrel cuff with round corners. Rounded cuffs give off a slightly more casual and relaxed..



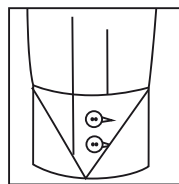
angle cut

A slight variation of the rounded cuffs, the only difference being the angled cut at the base of the cuff.



french

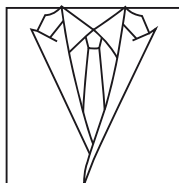
The most formal cuff. It is twice as long as regular cuffs and then folded back on themselves and closed with cuff links.



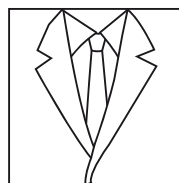
neapolitan

A two-button turnback cuff with an extra piece of fabric folded back to imitate a French cuff, but is held together by two buttons. Also known as cocktail, capril or bond cuff.

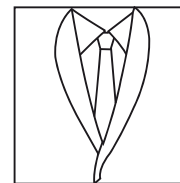
Lapels



peak

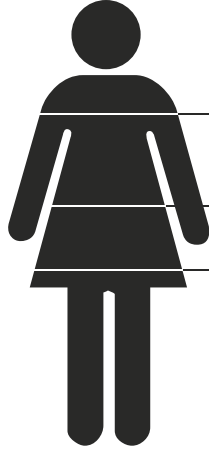


notch



shawl

SIZE FOR HER



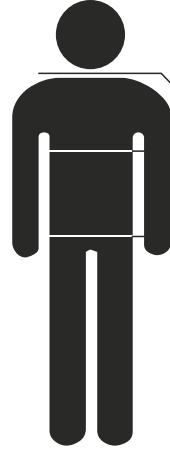
Measuring women

Bust: Around the fullest part and across the shoulder blades

Waist: Around the natural waistline

Hips: Around the fullest part (8in/20cm below the waist)

SIZE FOR HIM



Measuring men

Collar: Around the neck, at the base, where the shirt fits

Chest: Around the fullest part, under the arms and across the shoulder blades

Waist: Around the natural waistline, level, with the top of waistband

SIZE FOR HER

Formteks sizes	34	36	38	40	42	44	46	48	50	52	54	56	58
UK sizes	6	8	10	12	14	16	18	20	22	24	26	28	30
Bust cm	79-82	83-86	87-90	91-94	95-98	99-102	103-106	107-112	113-118	119-124	125-130	131-136	137-142
Waist cm	58-61	62-65	66-69	70-73	74-77	78-81	82-85	86-89	90-95	96-101	102-107	108-113	114-119
Hips	85-88	89-92	93-96	97-100	101-104	105-108	109-112	113-118	119-124	125-130	131-136	137-142	143-148
International sizes	XS		S		M		L		XL		XXL		XXXL

SIZE FOR HIM

Jackets, waistcoats

Formteks sizes	42	44	46	48	50	52	54	56	58	60	62	64	66	68	70
UK sizes	32	34	36	38	40	41	42	44	46	48	50	52	54	56	58
Chest cm	84	88	92	96	100	104	108	112	116	120	124	128	132	136	140
International sizes	S : 89/94 cm		M : 96/104 cm		L : 106-114 cm		XL : 117-122 cm		XXL : 122-127 cm						

Shirts (collar sizes)

Formteks sizes	34	35	36	37	38	39	40	41	42	43	44	45	46	47	48
UK sizes	13 ^{1/2}	13 ^{3/4}	14	14 ^{1/2}	15	15 ^{1/2}	15 ^{3/4}	16	16 ^{1/2}	17	17 ^{1/4}	17 ^{3/4}	18	18 ^{1/2}	19

Trousers

Formteks sizes	36	38	40	42	44	46	48	50	52	54	56	58
UK sizes	28	30	31	33	34	36	38	40	41	42	44	46
Waist cm	72	76	80	84	88	92	96	100	104	108	112	116
Hips cm	90	95	98	101	104	107	110	113	116	119	122	125

Formteks Uniform **Design** Catalog



Central Office

Address : Kazimiye Mah. Omurtak Cad. Olimpia İş Merkezi
14 / 30 Çorlu - Tekirdağ - Türkiye
Phone : + 90 282 673 45 33
+ 90 282 673 54 59
Fax : + 90 282 673 45 34
e-mail : formteks@formteks.com.tr

Branch Office 1

Address : Namık Kemal Mah. Yeni Otoban Cad. Kızılpinar
Çerkezköy - Tekirdağ - Türkiye
Phone : + 90 282 727 39 40
Fax : + 90 282 727 39 26
e-mail : kizilpinar@formteks.com.tr

Branch Office 2

Address : Hürriyet Mah. Sanayi Cad. No: 37
Ergene - Tekirdağ - Türkiye
Phone : + 90 282 655 50 55
Fax : + 90 282 655 62 51
e-mail : ergene@formteks.com.tr

